



## AIRPORT AND FERRY DIVISION MEMORANDUM

**Date:** February 8, 2013

**Subject:** 2012 Year-End Ferry Performance Measures

This memorandum and the accompanying charts provide the Pierce County Ferry Performance Measures for the year ending 2012. Historical trend charts, varying in length of time depending on the specific topic, are also included to provide a basis for performance comparison.

This report includes four sections, in the following order: Ridership Charts, Revenue Tickets Used Chart, Vehicles Left Behind Charts, and On-Time/Delay Charts. Monthly subtotals for Passengers, Vehicles, and Exempt Categories are reported.

- New trend lines have been added to the Total Ferry Ridership 1986-2012 Chart. One trend line is polynomial, rather than linear, and better reflects the decreasing ferry ridership over time. A second linear trend line reflects the decline in ridership since the 2005 peak.
- A new trend line has also been added to the Vehicles Left Behind 1997 to Current Chart. Although the trend is downward, it is also an indication of decreasing ridership over time.
- Effective with this report, there are changes in the On-Time/Delay Reports.
  - The Percentage of On-Time Runs by Month, 2009-2012 report has been eliminated. There was little variation in the data month-to-month over the four year period and the report was not seen as having any real significance.
  - The Monthly and Year-to-Date Reports are now in a revised format. The new depiction reflects how few delays the Ferry System incurs and breaks out the delay contributing factors in an easier-to-read format.

Highlights for this reporting period include:

- 2012 total ridership was down 3.8% compared to 2011; non-exempt ridership, i.e., revenue traffic, was down only 2.1%. It is the latter number that has greater significance. The eligibility criteria for exempt travel were changed significantly for 2012.
- Although total traffic was down during 2012, traffic exceeded 2011 traffic levels in six of twelve months (February, March, April, May, August, and October).
- January 2012 traffic was down significantly, impacted by that month's snowstorm.
- Overall, total ridership continues to be below estimates.
- Due to the 2012 change in exempt vehicle policy, exempt vehicle totals are significantly below historical averages. In 2011, there were 3,396 exempt vehicles and passengers. In 2012, that number was reduced to 99.
- Other statistics of note:
  - Although students on the bus are no longer exempt as in past years, 2012 youth ridership has declined.
  - Senior/disabled ridership is down 10% for vehicles, 40% per passengers. Spot

checking of IDs for Senior/Disabled eligibility increased in 2012.

- The ferry operated 98.8% on time in December 2012 and 97.7% for all of 2012. This exactly matches the 97.7% 2011 annual on time rate. (Note: There is an error in the departure count shown in the report header that was not resolved as this report went to press. The delay percentages however are accurate.)
- One significant operational note is that, with M/V Christine Anderson not in service throughout the month of August (due to its biennial maintenance and overhaul drydock), there was not a single mechanical delay during one-vessel operations with the Steilacoom II. Kudos to ferry operator HMS for an excellent month.
- The five largest causes of 2012 delays are:
  - Full Load
  - Train
  - Other (i.e., no single trend-identifiable item)
  - Police
  - Power Outage
- 85% of Vehicles Left Behind in 2012 occurred in peak season.
- The 941 Vehicles Left Behind in August 2012 was higher than any month over the last three years, dating back to August 2009.

Respectfully submitted,

*Warren Hendrickson*

Aviation and Ferry Planner  
Pierce County Public Works and Utilities  
2702 South 42<sup>nd</sup> St, Suite 201  
Tacoma, WA 98409  
(253) 798-2428 (Office) - (253) 310-2961 (Cell)  
[warren.hendrickson@co.pierce.wa.us](mailto:warren.hendrickson@co.pierce.wa.us)

Attachments:

- 2012 Ridership
- 2011 Ridership
- 2010 Ridership
- 2002-2012 Ridership
- Total Ferry Ridership 1986-2012
- Ticket Sales by Month 2008-2012
- Vehicles Carried vs. Vehicles Left Behind 2012
- Vehicles Carried vs. Vehicles Left Behind 2011
- Vehicles Carried vs. Vehicles Left Behind 2010
- Vehicles Left Behind 1997 to 2012
- On-Time/Delay Report December 2012
- On-Time/Delay Report January 1 through December 31, 2012

## Pierce County Ferry - 2012 Ridership

Combined Islands	Jan-12 OUT	Feb-12 OUT	Mar-12 OUT	Apr-12 OUT	May-12 OUT	Jun-12 OUT	Jul-12 OUT	Aug-12 OUT	Sep-12 OUT	Oct-12 OUT	Nov-12 OUT	Dec-12 OUT	2012 TOTALS	
<b>Passengers</b>														
Adults	1,196	1,378	1,579	1,856	2,399	2,095	3,447	3,962	2,364	1,577	1,513	1,673	25,039	<b>Total Passengers  87,972</b>
Youth (Ages 6-18)	1,342	1,503	1,724	1,683	2,162	1,840	2,463	2,997	1,897	1,829	1,599	1,568	22,607	
Children (Under Age 6)	91	124	92	183	335	376	255	64	125	67	68	59	1,839	
Senior/Disabled Citizens	1,037	1,030	1,136	1,228	1,536	1,541	1,867	2,019	1,591	1,386	1,225	1,270	16,866	
Commuter Passengers	1,666	1,684	1,793	1,681	1,864	1,960	1,895	1,952	1,796	1,985	1,665	1,680	21,621	
<b>Monthly Passenger Total</b>	<b>5,332</b>	<b>5,719</b>	<b>6,324</b>	<b>6,631</b>	<b>8,296</b>	<b>7,812</b>	<b>9,927</b>	<b>10,994</b>	<b>7,773</b>	<b>6,844</b>	<b>6,070</b>	<b>6,250</b>	<b>87,972</b>	
<b>Vehicles</b>														
Up to 21' and Driver	1,354	1,676	1,795	2,062	2,393	2,007	3,327	3,557	2,342	1,734	1,700	1,736	25,683	<b>Total Vehicles  95,334</b>
Up to 21' and Sr/Disabled	834	646	678	749	669	638	823	886	709	705	626	559	8,522	
Up to 21' and Commuter	4,036	4,197	4,624	4,499	5,132	5,330	5,398	5,593	4,816	5,063	4,559	4,686	57,933	
Over 21' to under 30'	68	65	70	104	111	123	143	155	97	86	75	58	1,155	
30' to under 40'	45	31	45	87	70	86	99	141	69	67	53	43	836	
40' to under 50'	3	4	7	13	16	17	34	34	12	18	9	8	175	
50' to under 60'	1	1	5	3	6	9	10	20	4	3	4	3	69	
60' to under 70'	2	3	5	6	9	5	9	10	7	6	9	5	76	
70' to under 80'	0	0	1	6	6	2	0	4	2	2	1	2	26	
80' to under 90'	0	0	0	0	0	0	0	0	0	0	0	0	0	
90' and greater	0	0	0	0	0	0	0	0	0	0	0	2	2	
Motorcycle w/Driver	10	17	14	34	48	30	59	75	38	21	3	1	350	
Motorcycle w/Commuter	8	29	22	29	46	35	88	118	69	43	6	1	494	
3-Wheel Vehicles	1	0	0	0	2	1	3	2	3	1	0	0	13	
<b>Monthly Vehicle Total</b>	<b>6,362</b>	<b>6,669</b>	<b>7,266</b>	<b>7,592</b>	<b>8,508</b>	<b>8,283</b>	<b>9,993</b>	<b>10,595</b>	<b>8,168</b>	<b>7,749</b>	<b>7,045</b>	<b>7,104</b>	<b>95,334</b>	
<b>Non-Exempt Total</b>														
<b>Monthly Non-Exempt Total</b>	<b>11,694</b>	<b>12,388</b>	<b>13,590</b>	<b>14,223</b>	<b>16,804</b>	<b>16,095</b>	<b>19,920</b>	<b>21,589</b>	<b>15,941</b>	<b>14,593</b>	<b>13,115</b>	<b>13,354</b>	<b>183,306</b>	<b>183,306</b>
<b>Exempt</b>														
Exempt Vehicles	7	7	2	4	8	5	4	0	7	1	5	0	50	<b>Total Exempt  99</b>
Exempt Passengers	7	6	8	1	9	6	2	0	3	0	5	2	49	
<b>Monthly Exempt Total</b>	<b>14</b>	<b>13</b>	<b>10</b>	<b>5</b>	<b>17</b>	<b>11</b>	<b>6</b>	<b>0</b>	<b>10</b>	<b>1</b>	<b>10</b>	<b>2</b>	<b>99</b>	
<b>Other - NOT INCLUDED</b>														
Cars Left Behind	40	12	11	30	279	43	539	941	187	43	17	1	2,143	
<b>Totals</b>	<b>11,708</b>	<b>12,401</b>	<b>13,600</b>	<b>14,228</b>	<b>16,821</b>	<b>16,106</b>	<b>19,926</b>	<b>21,589</b>	<b>15,951</b>	<b>14,594</b>	<b>13,125</b>	<b>13,356</b>	<b>183,405</b>	
Change from 2011	-12.45%	No Change	-2.29%	-1.82%	9.65%	-4.31%	-5.45%	-0.03%	-11.69%	-2.14%	-7.09%	-7.98%	-3.80%	

*Anderson & Ketron  
Island*

Pierce County Public Works & Utilities  
Airport and Ferry Division  
2702 South 42nd Street, Suite 201  
Tacoma, WA 98409

<b>Total Passengers</b>	<b>87,972</b>
<b>Total Vehicles</b>	<b>95,334</b>
<b>Total Exempt</b>	<b>99</b>
<b>Total Ridership</b>	<b>183,405</b>

## Pierce County Ferry - 2011 Ridership

Combined Islands	Jan-11 OUT	Feb-11 OUT	Mar-11 OUT	Apr-11 OUT	May-11 OUT	Jun-11 OUT	Jul-11 OUT	Aug-11 OUT	Sep-11 OUT	Oct-11 OUT	Nov-11 OUT	Dec-11 OUT	2011 TOTALS	
<b>Passengers</b>														
Adults	1,286	1,389	1,317	1,623	1,979	2,176	3,874	3,796	2,640	1,716	1,575	1,655	25,026	<b>Total Ticketed Passengers  90,170</b>
Youth (Ages 5-18)	1,327	1,299	1,486	1,586	1,778	1,990	3,155	2,782	2,496	1,748	1,781	1,707	23,135	
Children (Under Age 5)	109	92	106	189	160	113	55	169	189	115	101	135	1,533	
Senior/Disabled Citizens	1,217	1,155	1,275	1,358	1,473	1,840	1,992	2,212	1,748	1,480	1,497	1,449	18,696	
Commuter Passengers	1,845	1,580	1,873	1,690	1,694	1,918	1,920	1,971	1,919	1,922	1,757	1,691	21,780	
<b>Monthly Passenger Total</b>	<b>5,784</b>	<b>5,515</b>	<b>6,057</b>	<b>6,446</b>	<b>7,084</b>	<b>8,037</b>	<b>10,996</b>	<b>10,930</b>	<b>8,992</b>	<b>6,981</b>	<b>6,711</b>	<b>6,637</b>	<b>90,170</b>	
<b>Vehicles</b>														
Up to 21' and Driver	1,666	1,588	1,609	1,978	2,126	2,093	3,412	3,476	2,694	1,891	1,796	1,952	26,281	<b>Total Ticketed Vehicles  97,076</b>
Up to 21' and Sr/Disabled	1,392	1,241	1,371	1,371	1,025	749	875	944	986	1,400	1,363	1,406	14,123	
Up to 21' and Commuter	3,861	3,492	4,171	4,042	4,468	5,377	5,346	5,599	4,788	4,238	3,945	4,188	53,515	
Over 21' to under 30'	62	72	86	108	81	120	132	126	136	106	74	60	1,163	
30' to under 40'	32	36	55	82	81	101	104	118	99	57	56	38	859	
40' to under 50'	2	8	8	15	23	26	25	23	15	17	9	4	175	
50' to under 60'	11	4	11	11	6	14	12	25	9	10	5	1	119	
60' to under 70'	8	8	9	11	10	14	8	2	19	12	7	7	115	
70' to under 80'	0	4	11	2	22	4	8	9	4	1	0	1	66	
80' to under 90'	0	0	0	0	0	1	0	0	0	0	0	0	1	
90' and greater	0	0	0	0	0	0	0	0	0	0	0	0	0	
Motorcycle w/Driver	17	17	8	15	26	34	41	56	76	13	2	7	312	
Motorcycle w/Commuter	13	18	12	21	33	51	60	60	25	27	11	13	344	
3-Wheel Vehicles	0	0	0	0	0	0	2	1	0	0	0	0	3	
<b>Monthly Vehicle Total</b>	<b>7,064</b>	<b>6,488</b>	<b>7,351</b>	<b>7,656</b>	<b>7,901</b>	<b>8,584</b>	<b>10,025</b>	<b>10,439</b>	<b>8,851</b>	<b>7,772</b>	<b>7,268</b>	<b>7,677</b>	<b>97,076</b>	
<b>Non-Exempt Total</b>														
<b>Monthly Non-Exempt Total</b>	<b>12,848</b>	<b>12,003</b>	<b>13,408</b>	<b>14,102</b>	<b>14,985</b>	<b>16,621</b>	<b>21,021</b>	<b>21,369</b>	<b>17,843</b>	<b>14,753</b>	<b>13,979</b>	<b>14,314</b>	<b>187,246</b>	<b>187,246</b>
<b>Exempt</b>														
Exempt Vehicles	221	140	187	173	162	101	35	128	148	103	98	126	1,622	<b>Total Exempt 3,396</b>
Exempt Passengers	305	250	325	218	193	110	20	99	72	57	50	75	1,774	
<b>Monthly Exempt Total</b>	<b>526</b>	<b>390</b>	<b>512</b>	<b>391</b>	<b>355</b>	<b>211</b>	<b>55</b>	<b>227</b>	<b>220</b>	<b>160</b>	<b>148</b>	<b>201</b>	<b>3,396</b>	
<b>Other - NOT INCLUDED</b>														
Cars Left Behind	45	16	12	31	374	83	815	878	289	75	20	20	2,658	

<b>Totals</b>	<b>13,374</b>	<b>12,393</b>	<b>13,920</b>	<b>14,493</b>	<b>15,340</b>	<b>16,832</b>	<b>21,076</b>	<b>21,596</b>	<b>18,063</b>	<b>14,913</b>	<b>14,127</b>	<b>14,515</b>	<b>190,642</b>
---------------	---------------	---------------	---------------	---------------	---------------	---------------	---------------	---------------	---------------	---------------	---------------	---------------	----------------

Anderson & Ketron  
Island

Pierce County Public Works & Utilities  
Airport and Ferry Division  
9850 64th Street West  
University Place, WA 98467

<b>Total Passengers</b>	<b>90,170</b>
<b>Total Vehicles</b>	<b>97,076</b>
<b>Total Exempt</b>	<b>3,396</b>
<b>Total Ridership</b>	<b>190,642</b>

## Pierce County Ferry - 2010 Ridership

Combined Islands	Jan-10 OUT	Feb-10 OUT	Mar-10 OUT	Apr-10 OUT	May-10 OUT	Jun-10 OUT	Jul-10 OUT	Aug-10 OUT	Sep-10 OUT	Oct-10 OUT	Nov-10 OUT	Dec-10 OUT	2010 Totals	
<b>Passengers</b>														
Adults	1,466	1,481	1488	1,606	2,400	2,238	4,234	3,839	2,294	1,714	1,638	1,833	26,231	<b>Total Ticketed Passengers 94,716</b>
Commuters	2,045	1,800	1814	1,875	1,929	2,061	2,096	1,947	1,863	1,969	1,712	1,849	22,960	
Youth (5-18)	1,636	1,577	1787	1,827	2,332	2,268	3,488	2,841	2,130	2,186	1,622	1,632	25,326	
Senior/Disabled	1,158	1,094	1136	1,310	1,467	1,624	1,881	1,846	1,547	1,467	1,295	1,438	17,263	
Children (under 5)	143	168	159	245	336	308	490	345	250	201	138	153	2,936	
<b>Vehicles</b>														
Under 20'	1,632	1,609	1706	1,823	2,563	2,195	3,757	3,334	2,321	2,002	1,846	2,048	26,836	<b>Total Ticketed Vehicles  99,139</b>
Under 20'-Sr/Disabled	1,434	1,387	1413	1,431	1,107	712	881	823	930	1,368	1,289	1,499	14,274	
Under 20' (Commuters)	3,956	3,775	3879	3,967	4,357	5,735	5,635	5,722	4,887	4,448	3,924	4,286	54,571	
20' to 29'	49	84	93	118	125	117	149	132	99	83	69	69	1,187	
30' to 39'	51	63	49	68	107	106	137	111	83	83	38	46	942	
40' to 49'	8	12	11	20	28	18	37	32	15	22	15	10	228	
50' to 59'	1	7	6	2	4	11	13	5	6	3	2	5	65	
60' to 69'	6	7	10	3	8	4	12	4	7	16	7	24	108	
70' to 79'	10	1	5	1	7	4	1	5	5	5	3	2	49	
Over 80'	0	0	0	0	0	0	1	0	0	0	0	0	1	
Motorcycle (Commuters)	20	33	35	31	41	51	104	83	38	28	20	15	499	
Motorcycle (Stowage)	13	16	15	16	26	39	67	52	63	37	12	14	370	
3-Wheeled	0	0	0	1	1	0	2	1	1	2	1	0	9	
<b>Exempt</b>														
Exempt Vehicles	200	200	302	251	163	153	377	220	371	239	141	180	2,797	<b>Total Exempt 4,935</b>
Exempt Passengers	131	80	212	203	143	193	164	190	220	197	180	225	2,138	
<b>Other - NOT INCLUDED</b>														
Cars Left Behind	16	14	12	93	534	91	927	500	526	44	47	34	2,838	
<b>Totals</b>	<b>13,959</b>	<b>13,394</b>	<b>14,120</b>	<b>14,798</b>	<b>17,144</b>	<b>17,837</b>	<b>23,526</b>	<b>21,532</b>	<b>17,130</b>	<b>16,070</b>	<b>13,952</b>	<b>15,328</b>	<b>198,790</b>	

*Anderson & Ketron  
Island*

Pierce County Public Works & Utilities  
Airport and Ferry Division  
9850 64th Street West  
University Place, WA 98467

<b>Total Passengers</b>	<b>94,716</b>
<b>Total Vehicles</b>	<b>99,139</b>
<b>Total exempt</b>	<b>4,935</b>
<b>Total Ridership</b>	<b>198,790</b>

\* Data source for "Cars Left Behind " statistic: 2010 DOR manual daily counts. Spreadsheet formula error discovered and repaired for 2011.

## Pierce County Ferry - 2002 to December 2012 Ridership

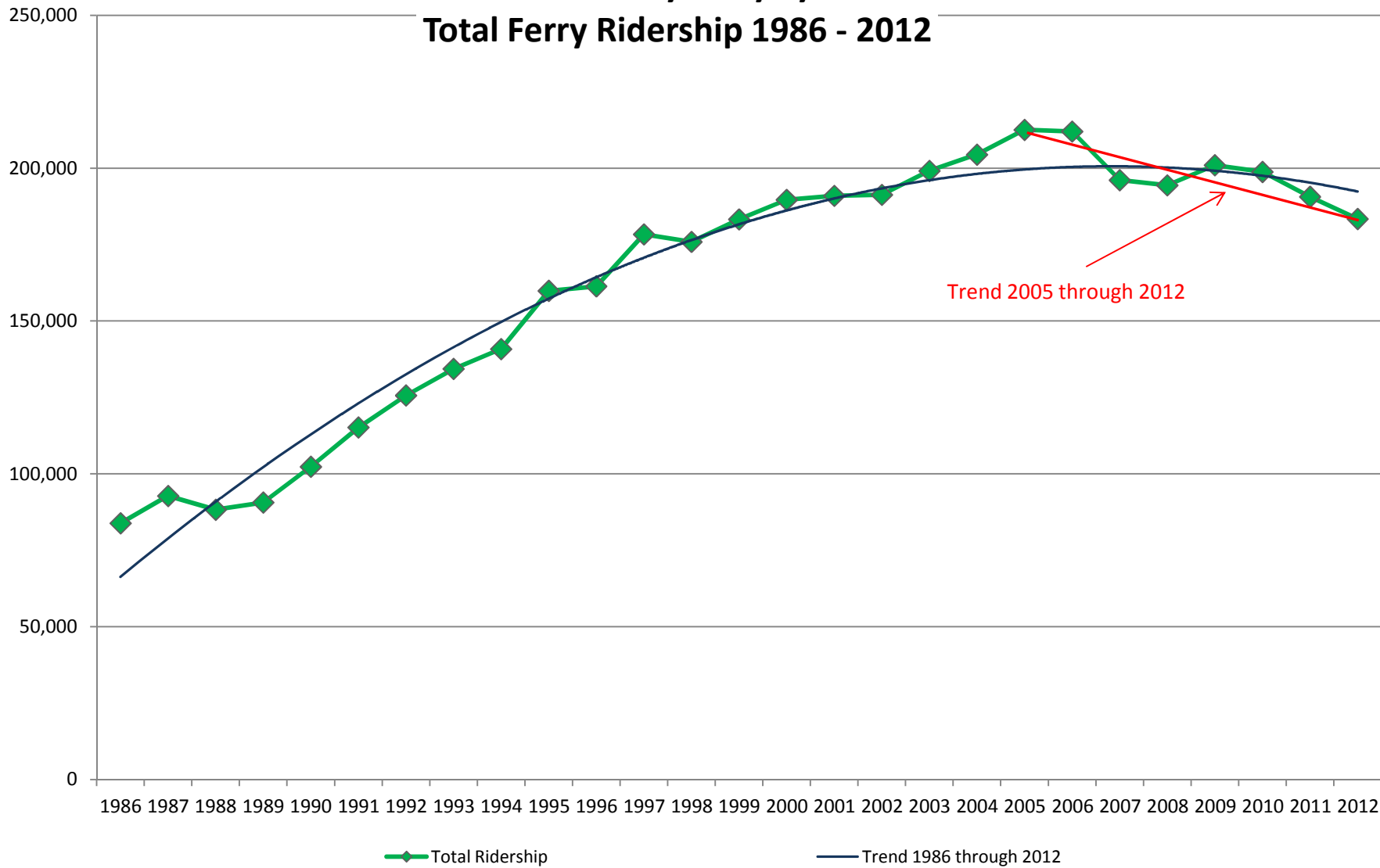
Combined Islands	2002	2003	2004	2005	2006	2007	2008	2009	2010	2011	2012	2001-2012 AVERAGES
<i>Passengers</i>												
Yearly Passenger Total	99,613	101,322	101,299	101,986	103,221	94,905	79,010	96,667	94,716	90,170	87,972	95,535
<i>Vehicles</i>												
Yearly Vehicle Total	90,181	96,130	100,775	107,941	105,027	98,880	100,008	101,231	99,139	97,076	95,334	99,247
<i>Exempt</i>												
Yearly Exempt Total	1,496	1,674	2,356	2,614	3,748	2,309	15,385	3,070	4,935	3,396	99	3,735
<i>Other - NOT INCLUDED</i>												
Yearly Cars Left Behind				1,515	1,927	641	1,928	2,400	2,838	2,658	2,143	2,006
<b>Totals</b>	<b>191,290</b>	<b>199,126</b>	<b>204,430</b>	<b>212,541</b>	<b>211,996</b>	<b>196,094</b>	<b>194,403</b>	<b>200,968</b>	<b>198,790</b>	<b>190,642</b>	<b>183,405</b>	<b>198,517</b>

*Anderson & Ketron  
Island*

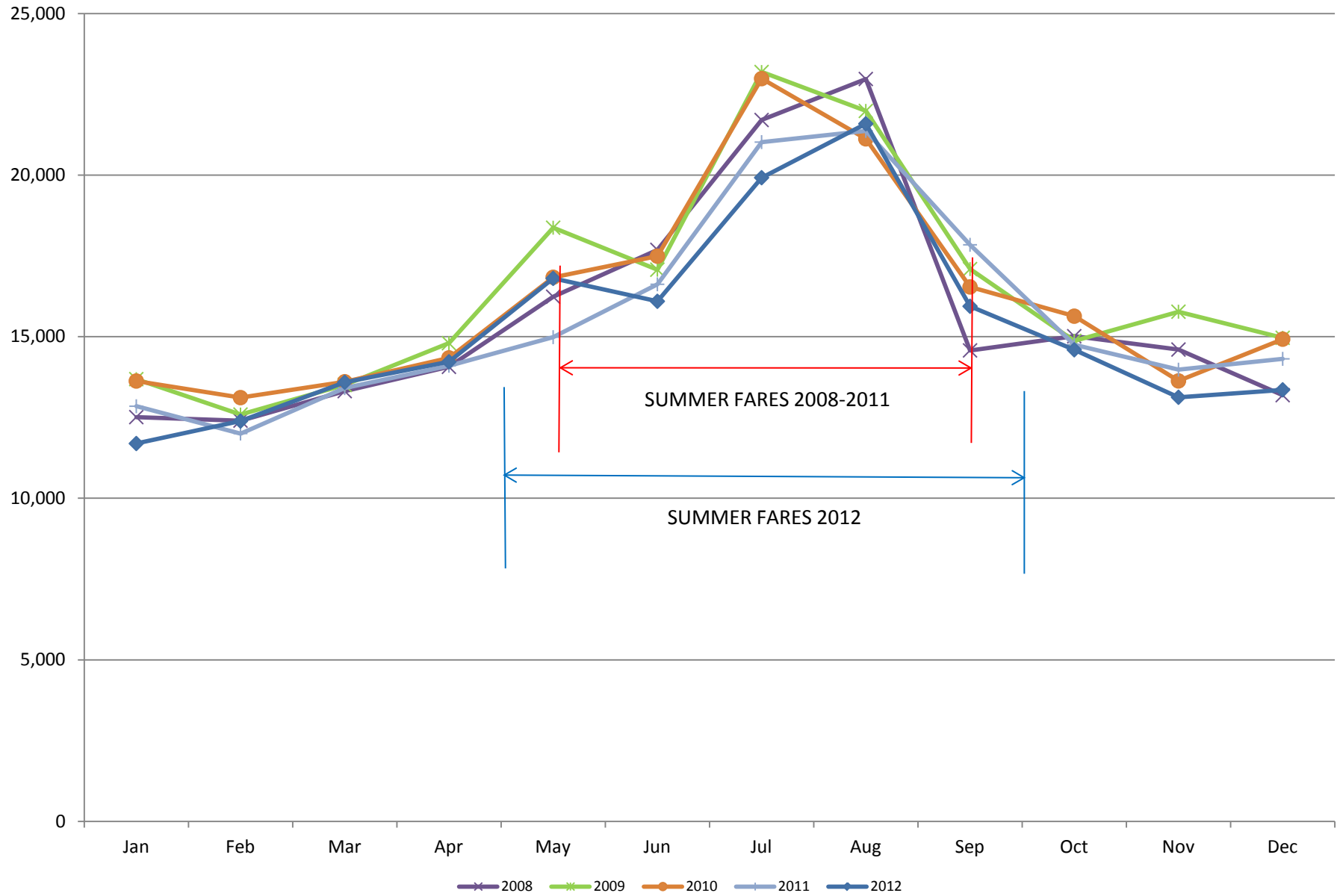
Pierce County Public Works & Utilities  
Airport and Ferry Division  
2702 South 42nd Street, Suite 201  
Tacoma, WA 98409

<i>11-Year Summary (2002-2012)</i>	
<b>Total Passengers</b>	<b>1,050,881</b>
<b>Total Vehicles</b>	<b>1,091,722</b>
<b>Total Exempt</b>	<b>41,082</b>
<b>Total Ridership</b>	<b>2,183,685</b>

# Pierce County Ferry System Total Ferry Ridership 1986 - 2012



# Pierce County Ferry System Ticket Sales by Month 2008 - 2012

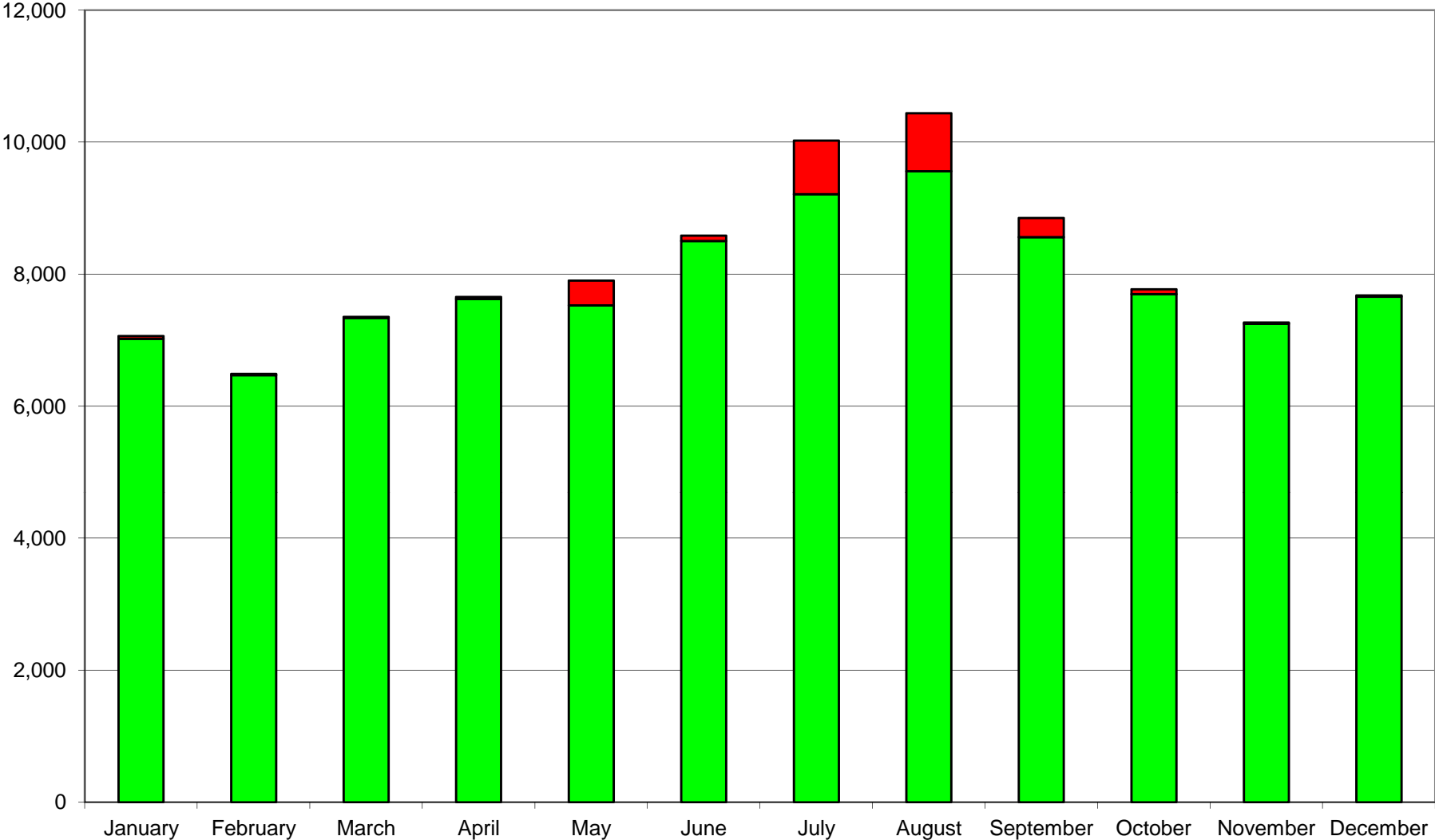




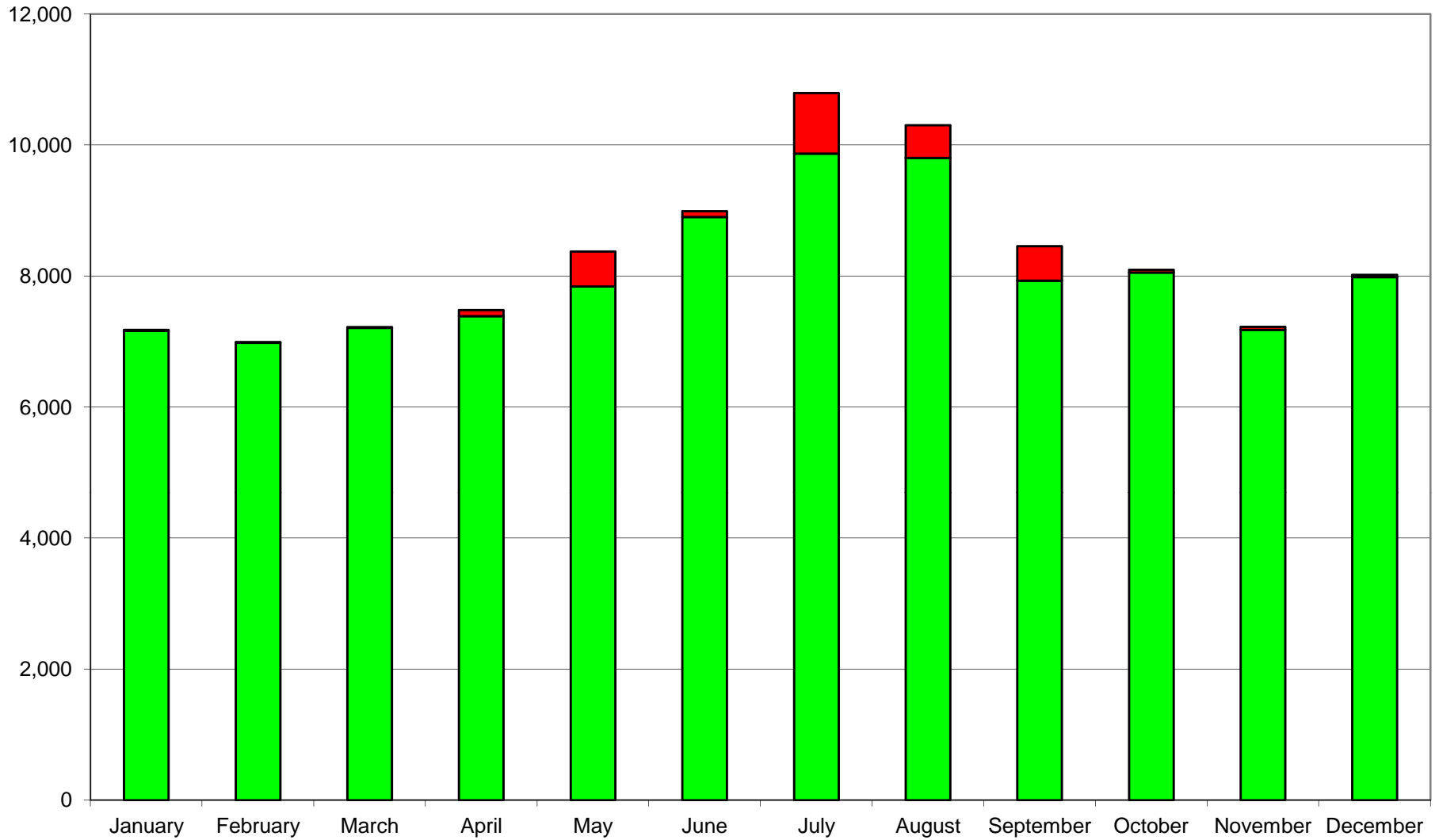
### Pierce County Ferry System Monthly Vehicles Carried Compared to Those Left Behind in 2012



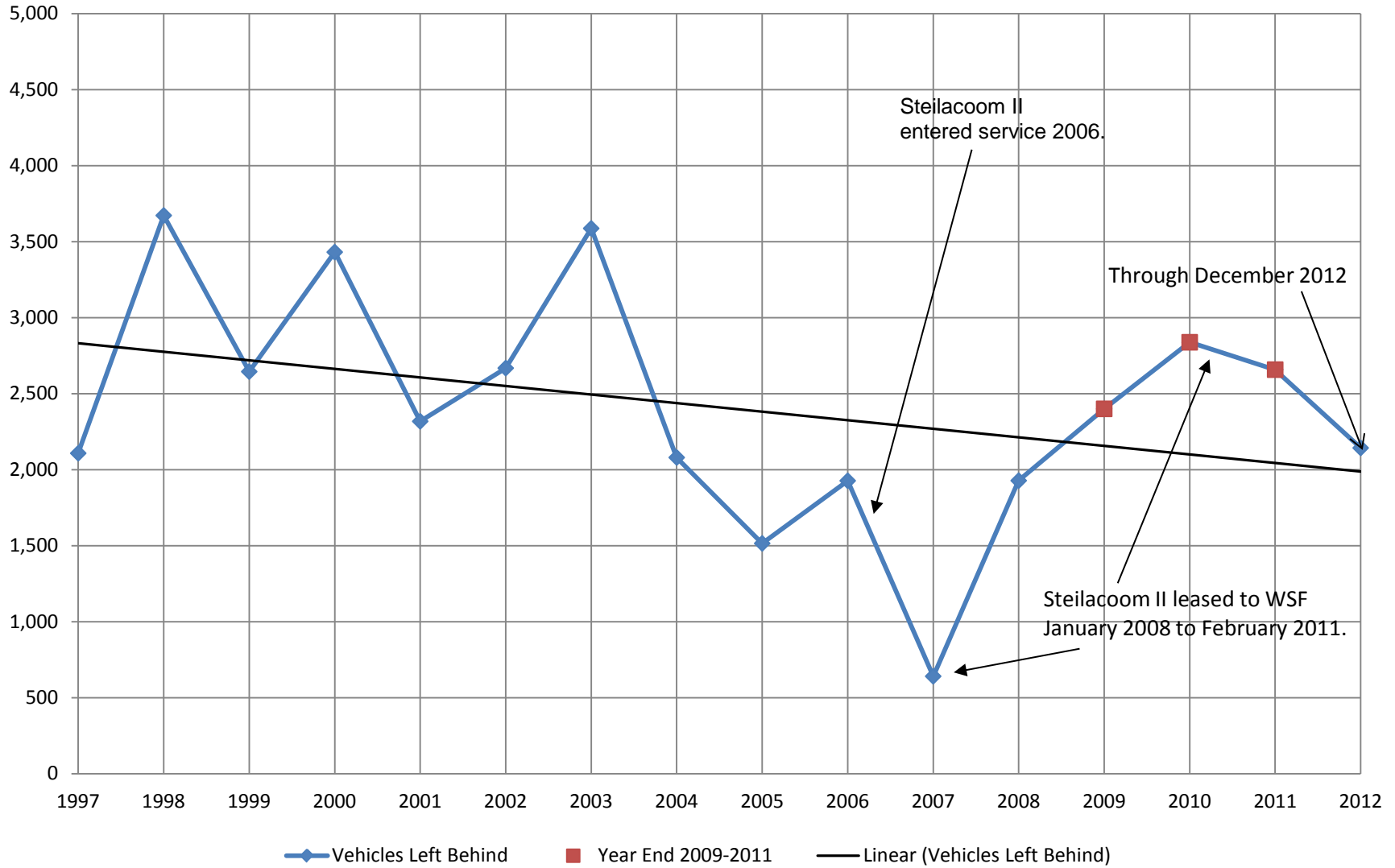
**Pierce County Ferry System Monthly Vehicles Carried Compared to Those Left Behind in 2011**



**Pierce County Ferry System Monthly Vehicles Carried Compared to Those Left Behind in 2010**



# Vehicles Left Behind from 1997 to Current

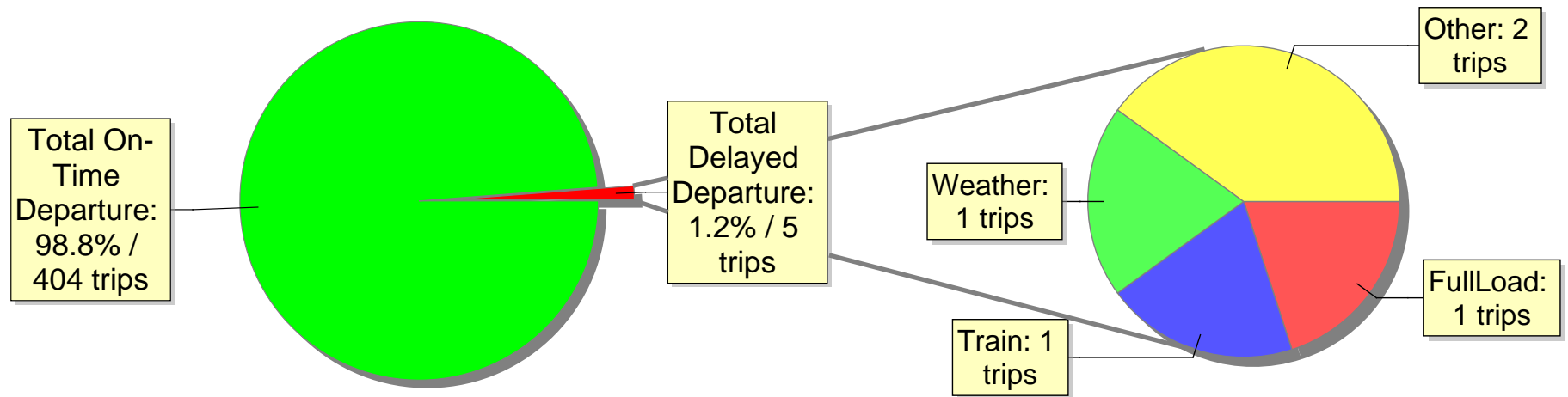


# Ferry On-Time/Delay Report From Dec.01 2012 To Dec.31 2012

Total On Time Departure Count	Total Delayed Departure Count	Percentage On Time
404	5	98.8%

**Total On-Time/Delay Percentage**

**Delay Distribution by Reasons**



## Ferry On-Time/Delay Report From Jan.01 2012 To Dec.31 2012

Total On Time Departure Count	Total Delayed Departure Count	Percentage On Time
5916	137	97.7%

**Total On-Time/Delay Percentage**

**Delay Distribution by Reasons**

