



**AIRPORT AND FERRY DIVISION MEMORANDUM**

**JANUARY 12, 2018**

*Subject: December 2017 Ferry Performance Measures*

This memorandum and the attached charts provide the Pierce County Ferry Performance Measures for December 2017. Historic trend charts are also included to provide a basis for performance comparison. Other than cars left behind, all ridership statistics are one-way figures.

**Fare Revenue**

MONTH	FARE REVENUE	BUDGETED FARE REVENUE
December 2017	\$178,766	\$179,750

*Monthly revenues reported in the Performance Measures December vary based on the posting date used by Pierce County Budget & Finance.*

**December 2017 Ridership**

RIDERSHIP CATEGORY	RIDERSHIP COUNT	PERCENT DIFFERENCE FROM 2016	DIFFERENCE IN RIDERS FROM 2016
YTD Total Ridership	217,152	13.52%	25,854
Monthly Total Ridership	16,613	7.43%	1,149
Walk-on Adults	2,098	11.30%	213
Walk-on Youth	1,649	6.73%	104
Walk-on Senior / Disabled	1,551	(2.33%)	-37
Walk-on Commuters	1,759	5.01%	84
Vehicles up to 21' with Driver	2,260	9.28%	192
Vehicles up to 21' with Commuter	5,768	6.74%	364
Vehicles up to 21' with Senior/Disabled	860	7.77%	62
Commuter Motorcycles	20	(41.18%)	-14

**Vehicles Left Behind in December**

VEHICLES LEFT BEHIND 2017	VEHICLES LEFT BEHIND 2016	% CHG FROM 2016
243	0	>100%

**On-Time / Delayed Departures**

% ON TIME	# OF RUNS	TOTAL DELAYED TRIPS	CAUSE OF DELAYS												
94.7%	957	51	<table> <tr> <td>Full Load</td> <td>5</td> </tr> <tr> <td>Mechanical</td> <td>5</td> </tr> <tr> <td>Train</td> <td>6</td> </tr> <tr> <td>Weather</td> <td>10</td> </tr> <tr> <td>Scheduled Ketron</td> <td>22</td> </tr> <tr> <td>Unknown *</td> <td>3</td> </tr> </table>	Full Load	5	Mechanical	5	Train	6	Weather	10	Scheduled Ketron	22	Unknown *	3
Full Load	5														
Mechanical	5														
Train	6														
Weather	10														
Scheduled Ketron	22														
Unknown *	3														

Respectfully submitted,  
Nick Lacsina  
Management Analyst  
Pierce County Public Works  
D: 253.798.6355 | [nlacsina@co.pierce.wa.us](mailto:nlacsina@co.pierce.wa.us)

**Attachments:**  
- 2017 Ridership  
- 2016 Ridership  
- Monthly ridership comparison  
- YTD ridership comparison  
- Monthly Ticket Sales  
- On-time delay report

\*Currently changing our data collection methods to ensure every delay has a cause recorded.

# Pierce County Ferry - 2017 Ridership

## Anderson & Ketron Islands

Combined Islands	Jan-17 OUT	Feb-17 OUT	Mar-17 OUT	Apr-17 OUT	May-17 OUT	Jun-17 OUT	Jul-17 OUT	Aug-17 OUT	Sep-17 OUT	Oct-17 OUT	Nov-17 OUT	Dec-17 OUT	2017 TOTALS	
<b>Passengers</b>														
Adults	1,396	1,342	1,736	1,867	2,746	2,839	4,860	4,083	2,952	1,818	1,823	2,098	29,560	<b>Total Passengers  98,900</b>
Youth (Ages 6-18)	1,509	1,330	1,631	1,689	2,397	2,280	3,290	2,988	2,273	1,906	1,813	1,649	24,755	
Children (Under Age 6)	110	113	122	191	338	298	843	741	397	152	104	212	3,621	
Senior/Disabled Citizens	1,282	1,238	1,415	1,483	1,784	1,908	2,299	2,249	1,936	1,725	1,514	1,551	20,384	
Commuter Passengers	1,533	1,393	1,675	1,598	1,860	1,820	1,793	1,884	1,755	1,819	1,691	1,759	20,580	
<b>Monthly Passenger Total</b>	<b>5,830</b>	<b>5,416</b>	<b>6,579</b>	<b>6,828</b>	<b>9,125</b>	<b>9,145</b>	<b>13,085</b>	<b>11,945</b>	<b>9,313</b>	<b>7,420</b>	<b>6,945</b>	<b>7,269</b>	<b>98,900</b>	
<b>Vehicles</b>														
Up to 21' and Driver	1,579	1,509	1,950	2,218	2,669	2,786	4,149	3,574	2,849	1,988	1,893	2,260	29,424	<b>Total Vehicles  115,672</b>
Up to 21' and Sr/Disabled	720	654	866	899	963	998	1,144	1,171	985	847	817	860	10,924	
Up to 21' and Commuter	5,208	4,953	5,647	5,283	6,193	6,583	6,301	6,767	6,169	6,118	5,689	5,768	70,679	
Over 21' to under 30'	108	97	158	147	128	79	114	132	135	92	108	111	1,409	
30' to under 40"	68	78	104	106	130	139	167	184	127	119	101	89	1,412	
40' to under 50'	14	19	20	26	34	107	53	45	28	39	24	24	433	
50' to under 60'	10	8	8	17	16	32	13	17	25	18	19	5	188	
60' to under 70'	14	10	12	12	15	22	27	16	27	14	9	7	185	
70' to under 80'	3	1	6	2	3	12	5	6	8	12	2	5	65	
80' to under 90'	0	0	0	0	0	3	0	0	0	0	0	0	3	
90' and greater	0	0	0	0	0	0	0	2	0	0	0	0	2	
Motorcycle w/Driver	8	5	9	16	33	28	62	51	55	14	7	2	290	
Motorcycle w/Commuter	35	23	31	27	65	88	87	96	70	49	30	20	621	
3-Wheel Vehicles	0	0	0	0	0	3	6	5	11	7	1	4	37	
<b>Monthly Vehicle Total</b>	<b>7,767</b>	<b>7,357</b>	<b>8,811</b>	<b>8,753</b>	<b>10,249</b>	<b>10,880</b>	<b>12,128</b>	<b>12,066</b>	<b>10,489</b>	<b>9,317</b>	<b>8,700</b>	<b>9,155</b>	<b>115,672</b>	
<b>Non-Exempt Total</b>	<b>0</b>	<b>0</b>	<b>0</b>	<b>0</b>	<b>0</b>	<b>0</b>	<b>0</b>	<b>0</b>	<b>0</b>	<b>0</b>	<b>0</b>	<b>0</b>	<b>0</b>	
<b>Monthly Non-Exempt Total</b>	<b>13,597</b>	<b>12,773</b>	<b>15,390</b>	<b>15,581</b>	<b>19,374</b>	<b>20,025</b>	<b>25,213</b>	<b>24,011</b>	<b>19,802</b>	<b>16,737</b>	<b>15,645</b>	<b>16,424</b>	<b>214,572</b>	<b>214,572</b>
<b>Exempt</b>	<b>0</b>	<b>0</b>	<b>0</b>	<b>0</b>	<b>0</b>	<b>0</b>	<b>0</b>	<b>0</b>	<b>0</b>	<b>0</b>	<b>0</b>	<b>0</b>	<b>0</b>	
Exempt Vehicles	62	134	122	184	245	274	223	319	303	307	218	189	2,580	<b>Total Exempt  2,580</b>
Exempt Passengers	0	0	0	0	0	0	0	0	0	0	0	0	0	
<b>Monthly Exempt Total</b>	<b>62</b>	<b>134</b>	<b>122</b>	<b>184</b>	<b>245</b>	<b>274</b>	<b>223</b>	<b>319</b>	<b>303</b>	<b>307</b>	<b>218</b>	<b>189</b>	<b>2,580</b>	
<b>Other - NOT INCLUDED</b>														
Cars Left Behind	0	0	45	72	248	444	1,350	605	407	95	147	243	3,656	
<b>Totals</b>	<b>13,659</b>	<b>12,907</b>	<b>15,512</b>	<b>15,765</b>	<b>19,619</b>	<b>20,299</b>	<b>25,436</b>	<b>24,330</b>	<b>20,105</b>	<b>17,044</b>	<b>15,863</b>	<b>16,613</b>	<b>217,152</b>	
Change from 2016	5.71%	18.58%	7.77%	2.79%	11.31%	17.40%	29.23%	11.35%	13.15%	22.96%	11.57%	7.43%	13.52%	

Pierce County Public Works & Utilities  
 Airport and Ferry Division  
 2702 South 42nd Street, Suite 201  
 Tacoma, WA 98409

<b>Total Passengers</b>	<b>98,900</b>
<b>Total Vehicles</b>	<b>115,672</b>
<b>Total Exempt</b>	<b>2,580</b>
<b>Total Ridership</b>	<b>217,152</b>

## Pierce County Ferry - 2016 Ridership Anderson & Ketron Islands

Combined Islands	Jan-16 OUT	Feb-16 OUT	Mar-16 OUT	Apr-16 OUT	May-16 OUT	Jun-16 OUT	Jul-16 OUT	Aug-16 OUT	Sep-16 OUT	Oct-16 OUT	Nov-16 OUT	Dec-16 OUT	2016 TOTALS	
<b>Passengers</b>														
Adults	1,403	982	1,603	1,867	2,690	2,541	3,972	4,186	2,594	1,377	1,577	1,885	26,677	<b>Total Passengers  89,294</b>
Youth (Ages 6-18)	1,402	1,203	1,590	1,638	1,996	1,958	2,604	1,993	2,101	1,491	1,639	1,545	21,160	
Children (Under Age 6)	50	34	87	159	160	81	144	619	257	76	106	234	2,007	
Senior/Disabled Citizens	1,331	1,133	1,397	1,487	1,746	1,708	1,769	2,042	1,741	1,409	1,366	1,588	18,717	
Commuter Passengers	1,703	1,385	1,900	1,813	1,964	1,939	1,544	1,830	1,719	1,580	1,681	1,675	20,733	
<b>Monthly Passenger Total</b>	<b>5,889</b>	<b>4,737</b>	<b>6,577</b>	<b>6,964</b>	<b>8,556</b>	<b>8,227</b>	<b>10,033</b>	<b>10,670</b>	<b>8,412</b>	<b>5,933</b>	<b>6,369</b>	<b>6,927</b>	<b>89,294</b>	
<b>Vehicles</b>														
Up to 21' and Driver	1,433	1,180	1,659	2,005	2,295	2,238	3,548	3,759	2,623	1,711	1,763	2,068	26,282	<b>Total Vehicles  101,702</b>
Up to 21' and Sr/Disabled	599	564	686	794	839	813	1,134	982	890	736	744	798	9,579	
Up to 21' and Commuter	4,829	4,211	5,185	5,217	5,561	5,644	4,504	5,796	5,371	5,199	5,054	5,404	61,975	
Over 21' to under 30'	62	59	113	127	115	109	124	189	121	109	88	101	1,317	
30' to under 40"	58	52	65	83	105	103	107	189	131	73	68	70	1,104	
40' to under 50'	10	6	10	15	31	26	34	46	27	13	24	17	259	
50' to under 60'	6	4	3	7	13	15	16	17	10	5	5	7	108	
60' to under 70'	3	6	8	11	9	20	19	15	19	8	22	14	154	
70' to under 80'	2	4	1	5	2	2	2	3	3	2	1	3	30	
80' to under 90'	0	0	0	0	0	6	0	0	0	0	0	0	6	
90' and greater	0	0	0	0	0	0	0	0	0	0	0	0	0	
Motorcycle w/Driver	2	8	19	47	24	18	55	106	56	14	11	5	365	
Motorcycle w/Commuter	16	21	23	30	40	57	105	44	67	42	42	34	521	
3-Wheel Vehicles	0	0	1	1	0	0	0	0	0	0	0	0	2	
<b>Monthly Vehicle Total</b>	<b>7,020</b>	<b>6,115</b>	<b>7,773</b>	<b>8,342</b>	<b>9,034</b>	<b>9,051</b>	<b>9,648</b>	<b>11,146</b>	<b>9,318</b>	<b>7,912</b>	<b>7,822</b>	<b>8,521</b>	<b>101,702</b>	
<b>Non-Exempt Total</b>														
<b>Monthly Non-Exempt Total</b>	<b>12,909</b>	<b>10,852</b>	<b>14,350</b>	<b>15,306</b>	<b>17,590</b>	<b>17,278</b>	<b>19,681</b>	<b>21,816</b>	<b>17,730</b>	<b>13,845</b>	<b>14,191</b>	<b>15,448</b>	<b>190,996</b>	<b>190,996</b>
<b>Exempt</b>														
Exempt Vehicles	10	18	30	24	21	10	0	35	38	16	27	16	245	<b>Total Exempt  302</b>
Exempt Passengers	2	15	14	7	14	3	2	0	0	0	0	0	57	
<b>Monthly Exempt Total</b>	<b>12</b>	<b>33</b>	<b>44</b>	<b>31</b>	<b>35</b>	<b>13</b>	<b>** 2</b>	<b>35</b>	<b>38</b>	<b>16</b>	<b>27</b>	<b>16</b>	<b>302</b>	
<b>Other - NOT INCLUDED</b>														
Cars Left Behind	32	26	13	50	487	247	702	510	301	0	0	0	2,368	
<b>Totals</b>	<b>12,921</b>	<b>10,885</b>	<b>14,394</b>	<b>15,337</b>	<b>17,625</b>	<b>17,291</b>	<b>19,683</b>	<b>21,851</b>	<b>17,768</b>	<b>13,861</b>	<b>14,218</b>	<b>15,464</b>	<b>191,298</b>	
Change from 2015	-3.31%	-13.46%	1.07%	2.95%	3.38%	0.00%	0.00%	8.98%	7.33%	-8.53%	13.14%	27.99%	1.83%	

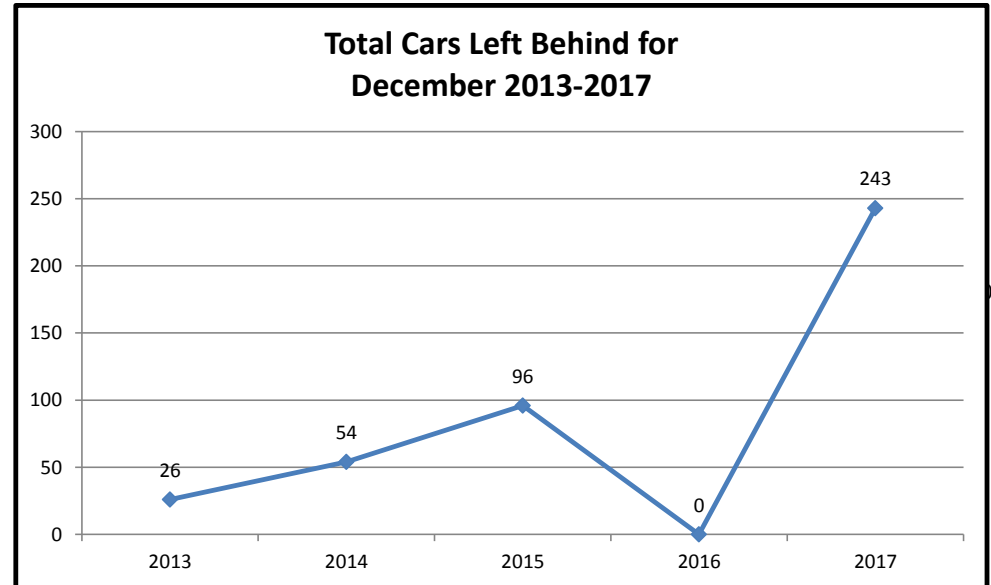
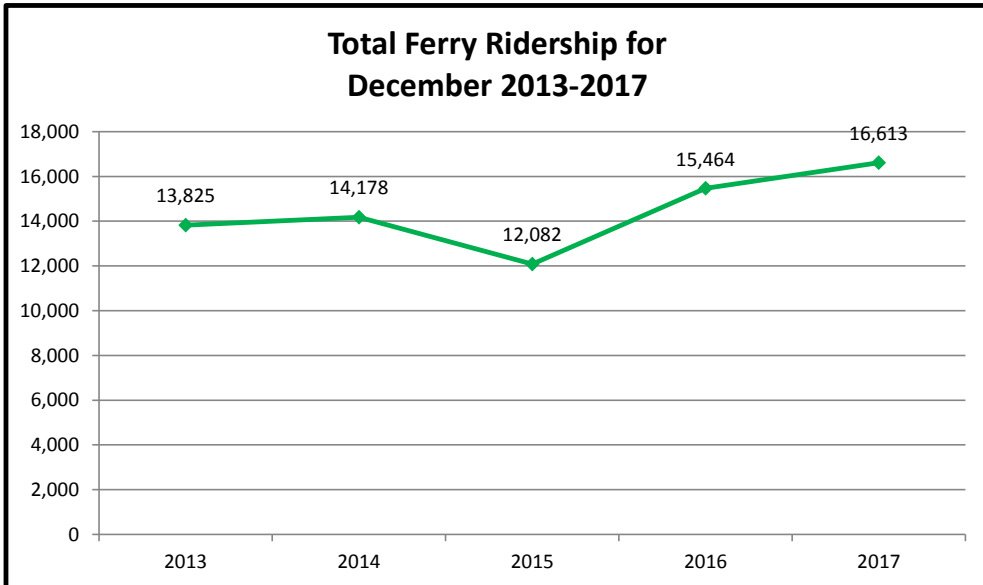
Pierce County Public Works & Utilities  
Airport and Ferry Division  
2702 South 42nd Street, Suite 201  
Tacoma, WA 98409

<b>Total Passengers</b>	<b>89,294</b>
<b>Total Vehicles</b>	<b>101,702</b>
<b>Total Exempt</b>	<b>302</b>
<b>Total Ridership</b>	<b>191,298</b>

## Pierce County Ferry - 2013 to 2017 Monthly Ridership For the Month of December

Combined Islands	2013	2014	2015	2016	2017	2013-2017 AVERAGES
<b>Passengers</b>						
Monthly Passenger Total	6,356	6,334	5,501	6,927	7,269	6,477
<b>Vehicles</b>						
Monthly Vehicle Total	7,467	7,831	6,566	8,521	9,155	7,908
<b>Exempt</b>						
Monthly Exempt Total*	2	13	15	16	189	47
<b>Other - NOT INCLUDED</b>						
Monthly Cars Left Behind**	26	54	96	0	243	84
<b>Totals</b>	<b>13,825</b>	<b>14,178</b>	<b>12,082</b>	<b>15,464</b>	<b>16,613</b>	<b>14,432</b>

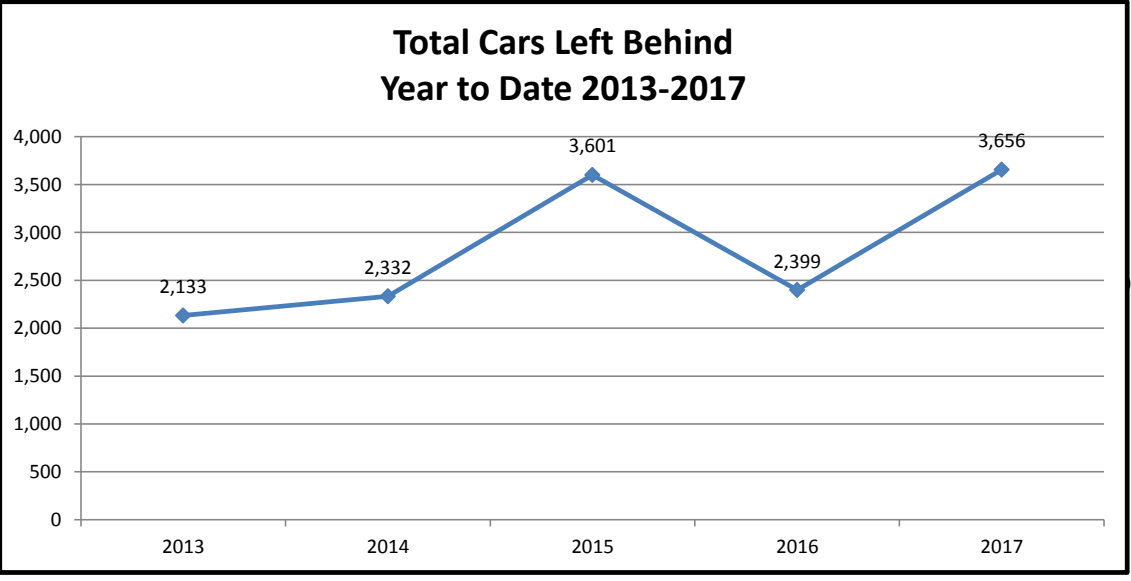
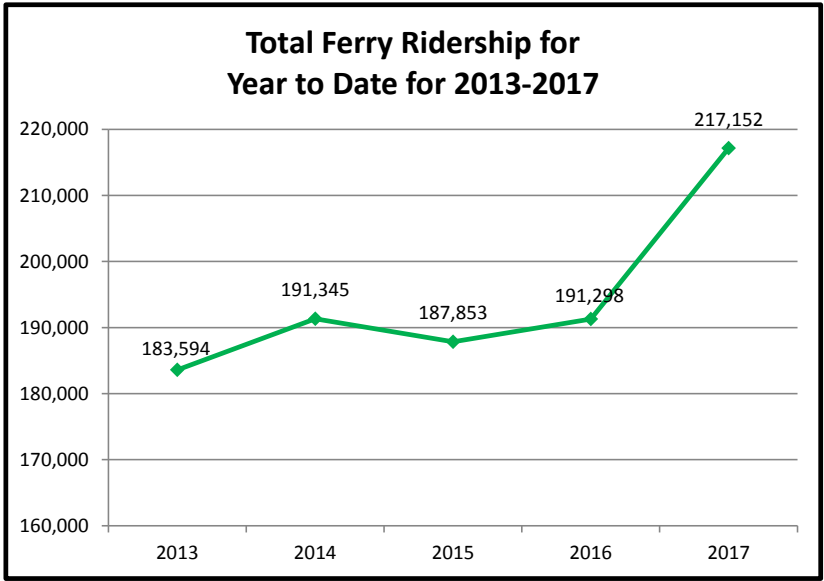
**Anderson & Ketron  
Islands**



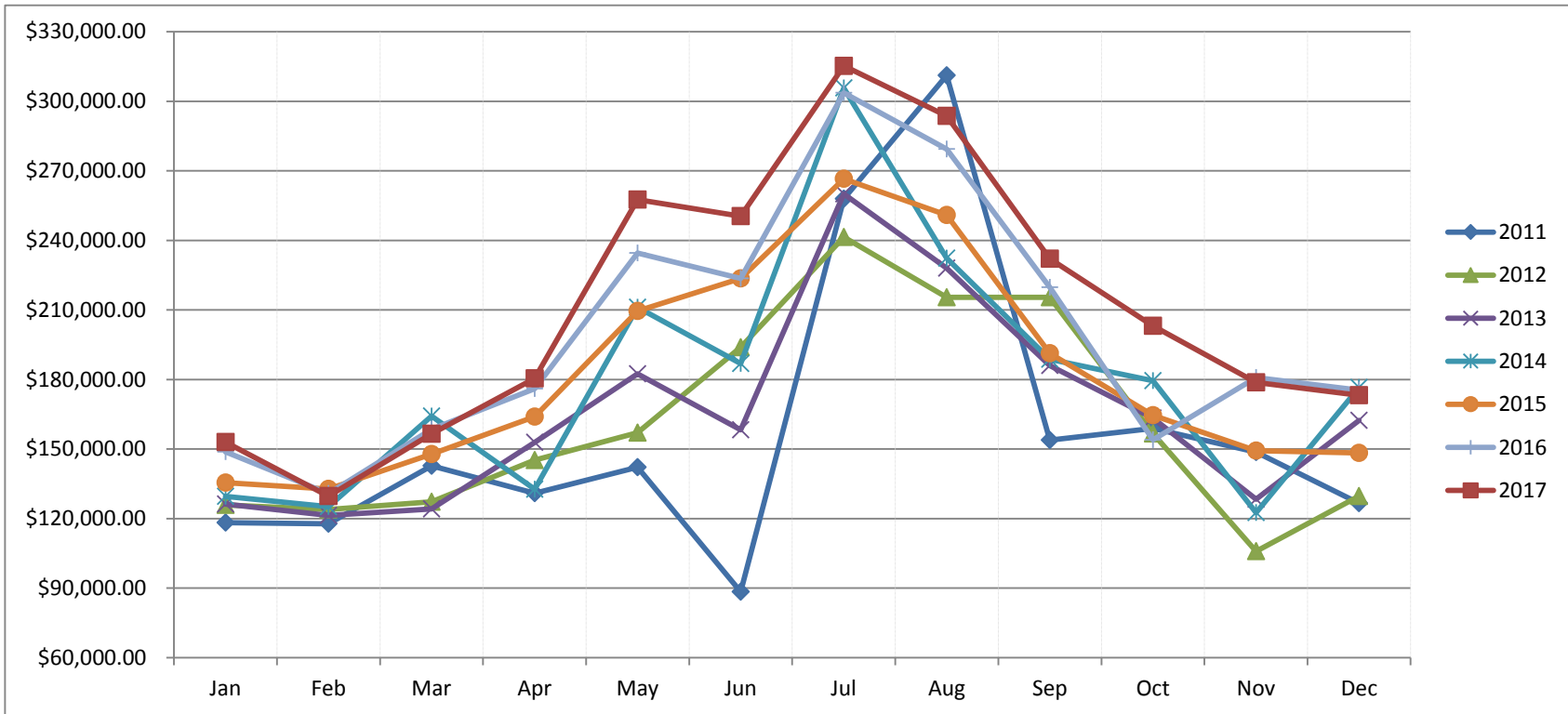
## Pierce County Ferry 2013 - 2017 Year to Date Totals Through December

Combined Islands	2013	2014	2015	2016	2017	2013-2017 AVERAGES
<b>Passengers</b>						
YTD Passenger Total	86,617	89,225	88,587	89,294	98,900	90,525
<b>Vehicles</b>						
YTD Vehicle Total	96,914	102,084	98,859	101,702	115,672	103,046
<b>Exempt</b>						
YTD Exempt Total*	63	36	407	302	2,580	678
<b>Other - NOT INCLUDED</b>						
Monthly Cars Left Behind**	2,133	2,332	3,601	2,399	3,656	2,824
<b>Totals</b>	<b>183,594</b>	<b>191,345</b>	<b>187,853</b>	<b>191,298</b>	<b>217,152</b>	<b>194,248</b>

**Anderson & Ketron  
Island**



## Pierce County Ferry System Ticket Sales by Month 2011-2017



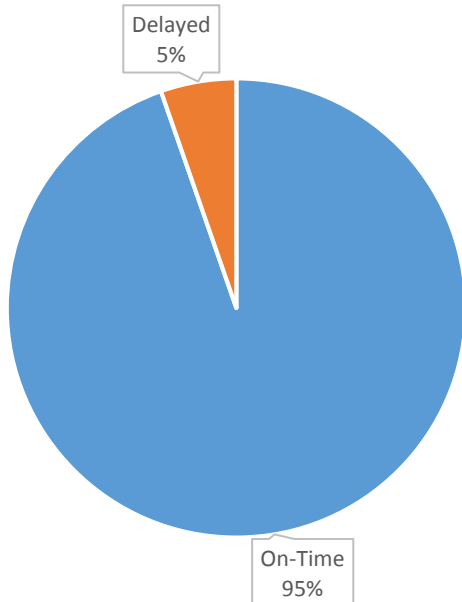
Month	2011	2012	2013	2014	2015	2016	2017
Jan	\$ 118,226.57	\$ 125,848.85	\$ 126,194.90	\$ 129,625.00	\$ 135,455.00	\$ 148,753.95	\$ 152,936.35
Feb	\$ 117,802.07	\$ 123,887.79	\$ 121,360.59	\$ 125,146.00	\$ 132,736.00	\$ 130,783.20	\$ 129,663.00
Mar	\$ 142,731.30	\$ 127,252.61	\$ 124,175.22	\$ 164,208.00	\$ 147,762.00	\$ 158,542.65	\$ 156,493.00
Apr	\$ 130,913.99	\$ 145,252.73	\$ 152,858.25	\$ 132,604.00	\$ 163,957.70	\$ 176,019.27	\$ 180,457.00
May	\$ 142,190.35	\$ 157,053.75	\$ 182,381.05	\$ 211,172.00	\$ 209,581.63	\$ 234,493.20	\$ 257,589.00
Jun	\$ 88,418.55	\$ 193,894.85	\$ 158,264.21	\$ 186,820.00	\$ 223,529.80	\$ 223,570.55	\$ 250,428.00
Jul	\$ 257,936.76	\$ 241,410.40	\$ 260,026.00	\$ 305,702.00	\$ 266,512.69	\$ 303,626.22	\$ 315,273.00
Aug	\$ 311,151.86	\$ 215,443.45	\$ 227,964.00	\$ 232,362.00	\$ 250,957.44	\$ 279,322.38	\$ 293,666.00
Sep	\$ 153,800.21	\$ 215,426.75	\$ 185,973.00	\$ 188,716.00	\$ 191,350.91	\$ 219,709.25	\$ 232,005.00
Oct	\$ 158,935.20	\$ 156,719.16	\$ 163,319.00	\$ 179,409.00	\$ 164,579.42	\$ 153,994.35	\$ 203,140.00
Nov	\$ 148,617.30	\$ 105,860.25	\$ 128,319.00	\$ 122,535.00	\$ 149,226.31	\$ 180,780.35	\$ 178,766.00
Dec	\$ 126,643.80	\$ 129,639.40	\$ 162,283.00	\$ 176,474.00	\$ 148,272.10	\$ 175,444.45	\$ 173,176.00
Totals	\$ 1,897,367.96	\$ 1,937,689.99	\$ 1,993,118.22	\$ 2,154,773.00	\$ 2,183,921.00	\$ 2,385,039.82	\$ 2,523,592.35

## Ferry On-Time / Delay Report for September

Total On-Time Departure	Total Delayed Departure	Total Ferry Runs	On-Time Percentage
906	51	957	94.7%

Delay by Reason	Number of Delays
Full Load	5
Mechanical	5
Train	6
Weather	10
Scheduled Ketron	22
Unknown *	3

### On-Time/Delay Percentage



### Delay Distribution by Reason

