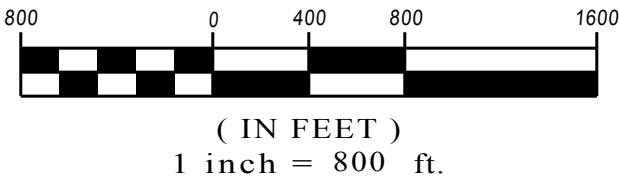


GRAPHIC SCALE



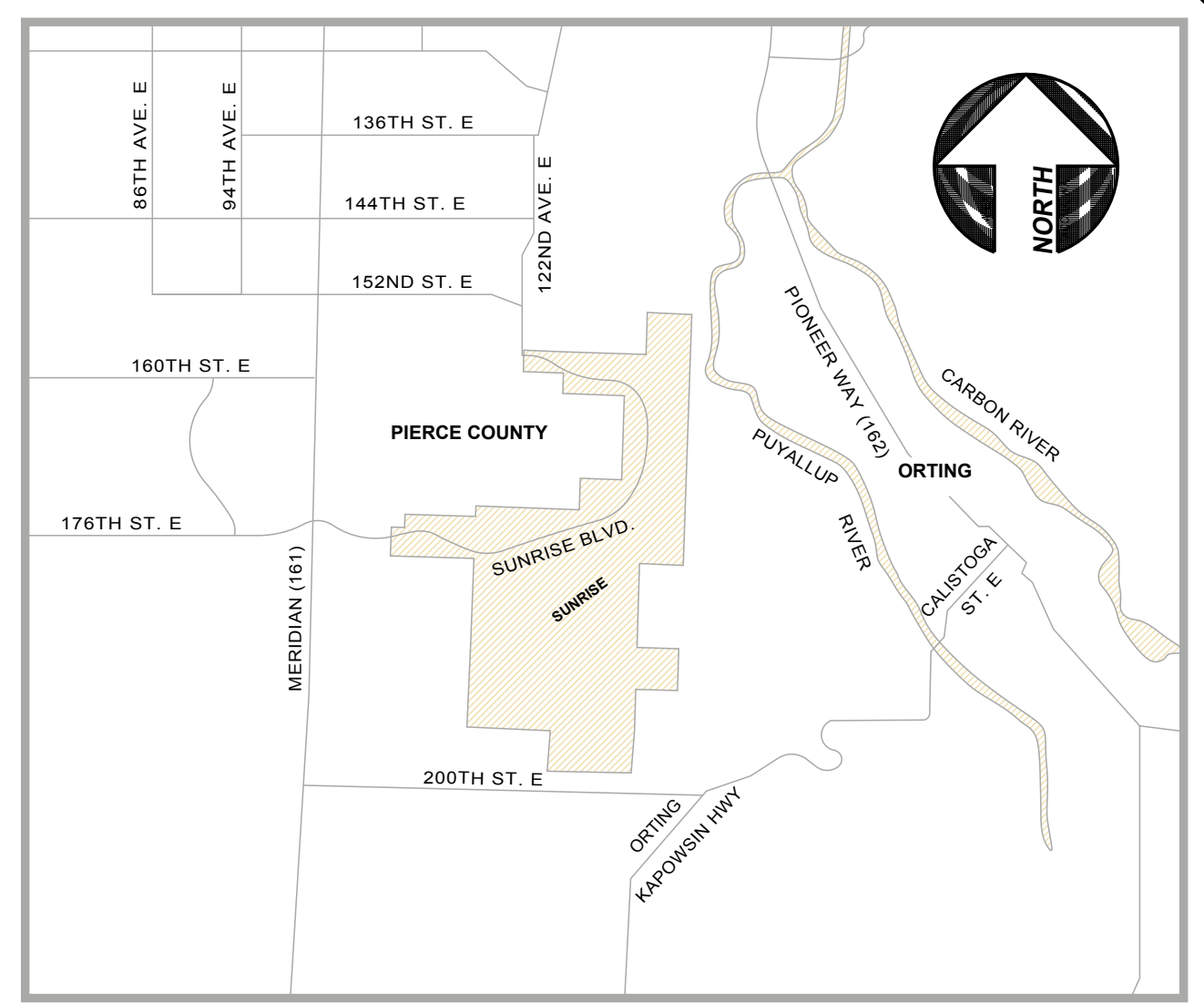
# SUNRISE

## MASTER PLAN

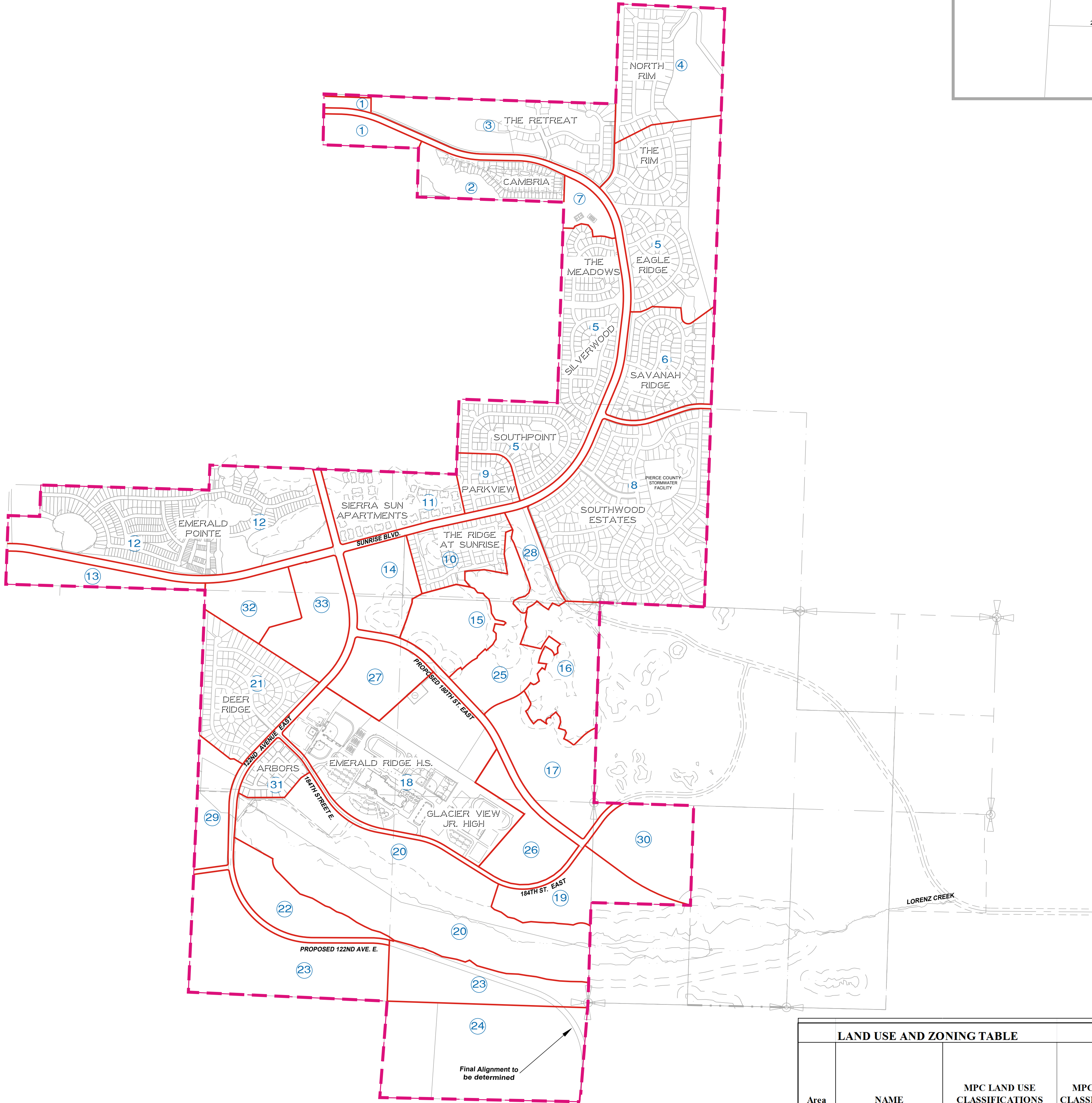
### 5 YEAR PLAN UPDATE -- 2015

#### LAND USE and ZONING MAP

#### FINAL SITE PLAN AS OF 1-13-16

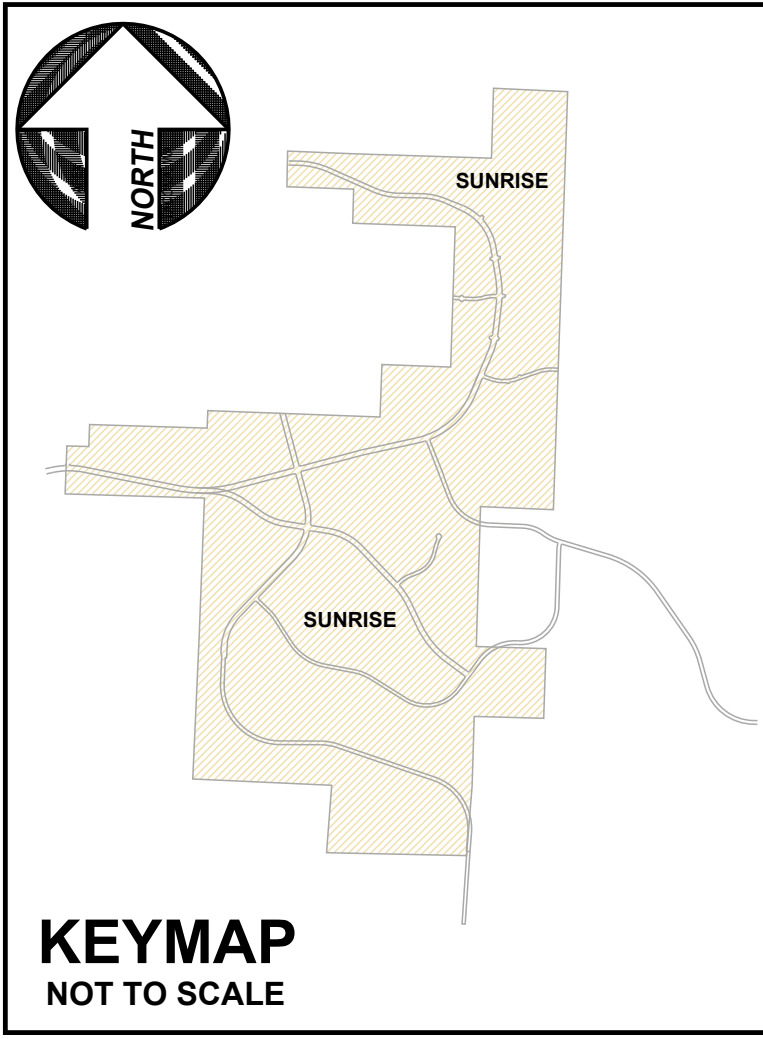


**VICINITY MAP**  
NOT TO SCALE



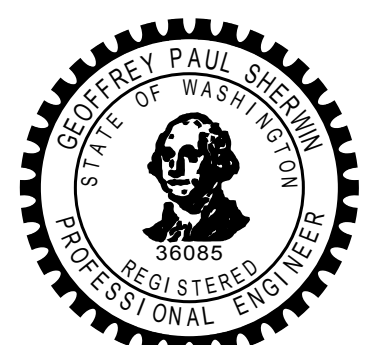
Final Alignment to be determined

LAND USE AND ZONING TABLE						
Area	NAME	MPC LAND USE CLASSIFICATIONS	MPC ZONING CLASSIFICATIONS	APPROVED OR EXISTING SINGLE FAMILY UNITS / PADS	APPROVED OR EXISTING MULTI-FAMILY UNITS / PADS	ACRES
1		Single Family	MSF			20.2
2	Cambria	Single-Family	HRD	93		25
3	The Retreat	Single-Family	MSF	49		50.5
4	North Rim	Single-Family	MSF	63		40.5
5	The Rim / Eagle Ridge / The Meadows / Silverwood / Southpoint	Single-Family	MSF	424		162.7
6	Savannah Ridge	Single-Family	MSF	122		38.5
7	Park	Park/Open Space	MSF	0	0	7.85
8	Southwood Estates	Single-Family	MSF	291		109.6
9	Parkview	Single-Family	MSF	48		11.6
10	Destiny	Single-Family	MSF	88		22
11	Sierra Sun Apartments	Multi-Family	MUD		249	80.2
12	Oakpointe	Multi-Family	HRD	334	301	60.6
13	Sunrise Medical	Commercial	UNC			15.8
14		Commercial/Residential	CC			22.3
15		Multi-Family	MUD			24
16		Park/Open Space	MSF	0	0	32.7
17		Single-Family	MSF			35.4
18	Puyallup School District	Schools				100.1
19		Single-Family	MSF			25.4
20	Community 5	Single-Family	MSF			113.3
21	Deer Ridge	Single-Family	MSF	145		41.8
22		Single-Family	MSF			23.1
23		Single-Family	MSF			86.4
24		Single-Family	MSF			76.4
25	Community 1A	Single-Family	MSF			30.5
26		Multi-Family	HRD			22.9
27		Multi-Family	MUD			20
28	Community 1	Single-family	MSF			9
29		Single-Family	MSF			8.3
30		Single-Family	MSF			30.3
31	The Arbors	Single-Family	MSF	33		10.5
32		Multi-Family	MUD			18.7
33		Commercial/Residential/Park	CC			26.7
		Pond IV-6				7.5
		Pond IV-4				8
		Water Tank				1.1
		Roads & Linear Park				47.4
			<b>Total Acres</b>			<b>1467</b>
			<b>Total Units to Date</b>	<b>1690</b>	<b>550</b>	
			<b>Total Allowed Units (Major Amendment Application 652446)</b>		<b>4728</b>	



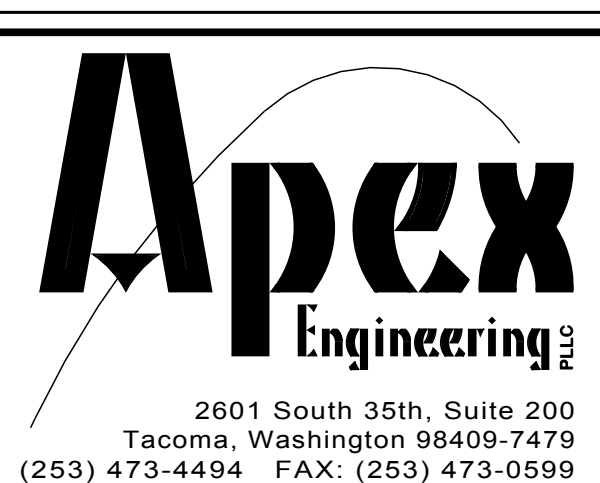
**KEYMAP**  
NOT TO SCALE

REV NO	REVISION DESCRIPTION	DATE	BY	DATE SEALED



**TITLE** **SUNRISE MASTER PLAN**  
5 YEAR PLAN UPDATE -- 2015  
LAND USE and ZONING MAP  
FINAL SITE PLAN AS OF 1-13-16

**OWNER**  
**SUNRISE DEVELOPMENT CORPORATION**  
3106-A Sumner Tapps Hwy. E. Lake Tapps, WA 98391  
(253) 826-5003 ATTN: ERIC CORLISS



**PROJECT MANAGER**  
GOEFF SHERWIN, P.E.

**DESIGN** KRS  
**DRAWN** KRS  
**CHECKED** \_\_\_\_\_  
**DATE** 1-13-16  
**SCALE** 1"=800'

**SHEET 1 OF 1**  
**FILE NO** 33325